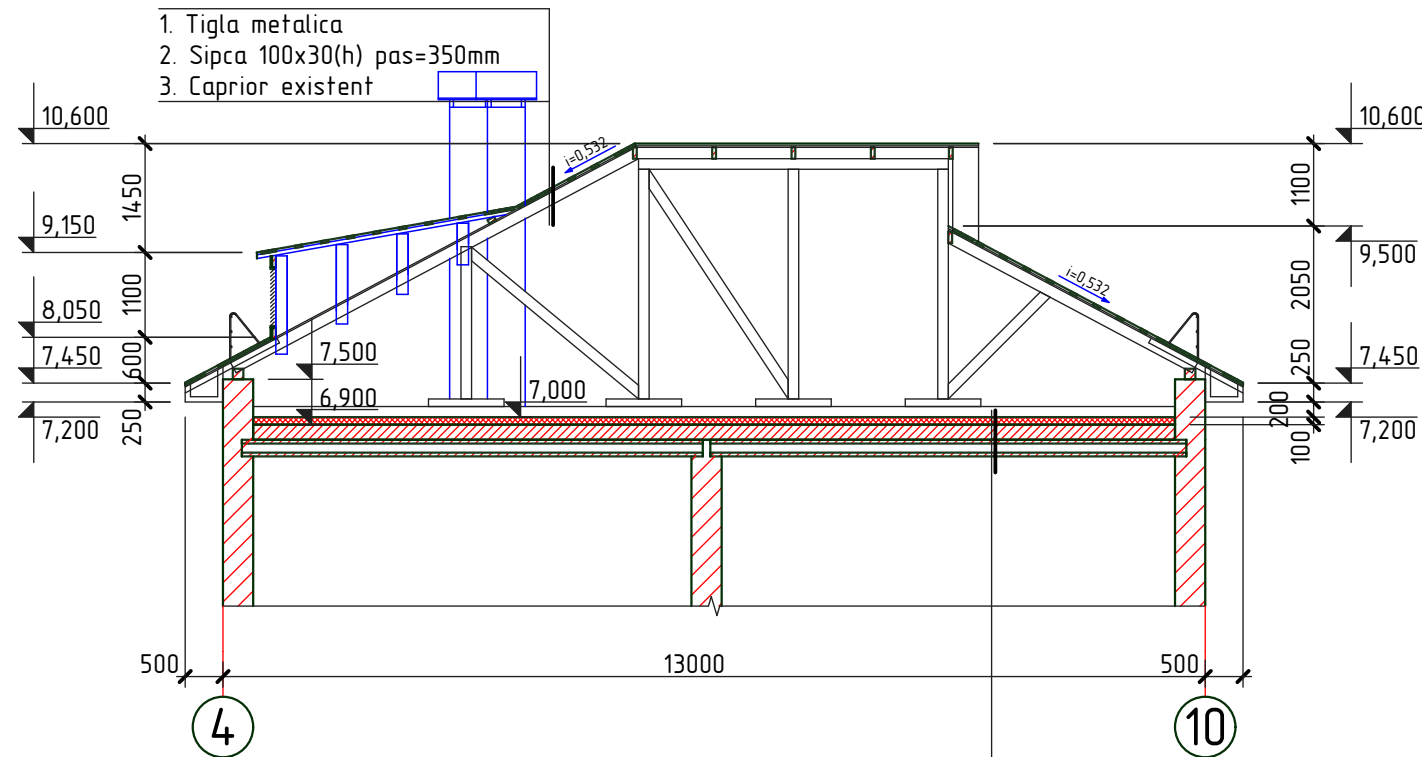


Sectionea A-A

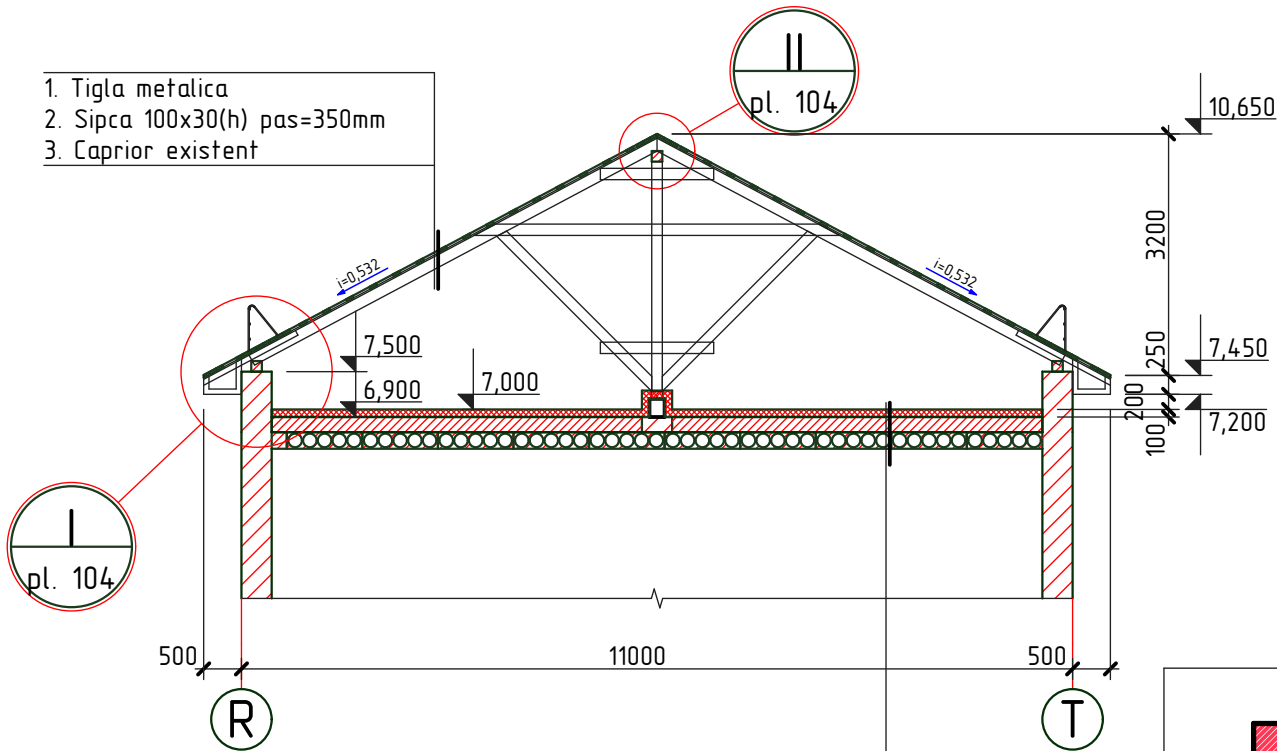
sc. 1:100



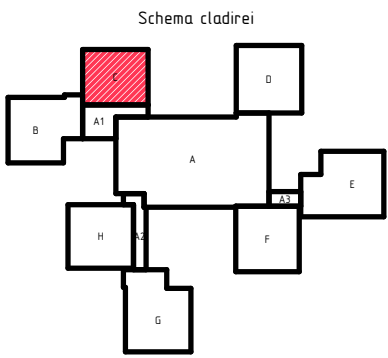
1. Membrana antivânt "TEND"
2. Termoizolant: vata minerala bazaltica, ignifuga
 $\gamma=125 \text{ kg/m}^3$, $\lambda=0,037 \text{ W/mk}$, $\delta=100\text{mm}$
3. Membrana contravapori "TEND"
4. Invelis existent de acoperis $\delta=250\text{mm}$
5. Planseu existent

Sectionea B-B

sc. 1:100



1. Membrana antivânt "TEND"
2. Termoizolant: vata minerala bazaltica, ignifuga
 $\gamma=125 \text{ kg/m}^3$, $\lambda=0,037 \text{ W/mk}$, $\delta=100\text{mm}$
3. Membrana contravapori "TEND"
4. Invelis existent de acoperis $\delta=250\text{mm}$
5. Planseu existent



1. Specificatia materialelor vezi pl. 105.

2020	28.07-D/20-SAC			Reparatia capitala a acoperisului scolii primare nr. 21 "S. Vangheli" din str. Tudor Vladimirescu 16		
A.S.P	Mihaila V.		07.20	Scoala primara	faza	plansa
I.S.P	Hihlat Em.		07.20	Bloc C	PE	103
Elaborat	Mihaila V.		07.20	Sectionea A-A si B-B	"GEO-CAD-PROIECT" mun. Balti	